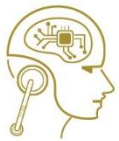


# intercel

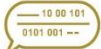
## Last Gasp Battery Backup User Guide



Artificial intelligence



Robot Assistants



Chatbot



Block chain



Machine Learning



Deep learning



Cloud computing



Cyber security



Cryptocurrency



Big Data



## Overview

The last-gasp backup battery is a modular unit designed to connect to an Intercel Smart SAM modem, allowing the modem to detect a loss of power supply and send an alert back to a remote server.

An alert signal can be sent via an SMS to a preset number, or a using a data packet depending on the preferred configuration.

### Battery Characteristics:

The internal Lithium Phosphate (LiFePO<sub>4</sub>) battery can last up to a total of 30 minutes on a full charge and is easily replaced by the end user. The battery is capable of 1000 charge/discharge cycles. This product is supplied with a 2-year warranty, however depending on the frequency of power outages, battery lifetime can be expected to extend well beyond the warranty period without requiring replacement. For further peace of mind, battery charge level can be measured and reported remotely.

The following table provides an overview of expected battery life based on number of power outages experienced within a given timeframe.

Outages per Annum	Estimated Battery Life*
50	10 years
100	5 years
150	3.3 years
200	2.5 years

*\*When connected to Intercel SAMXT modem, ambient temperature 25°C ±5°C, max 30-minute outage*



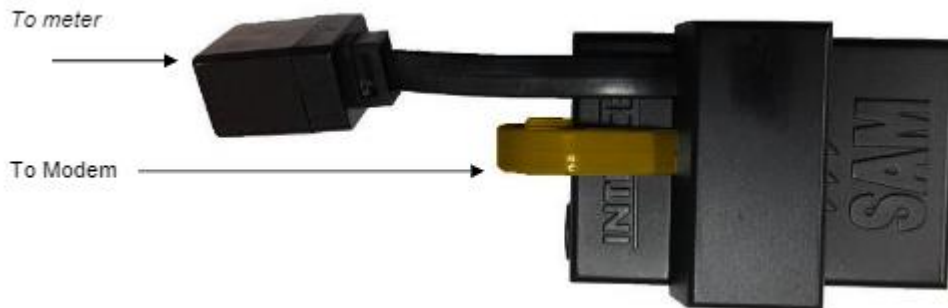
## RJ45 Socket Configuration:

Pin	Signal	Description
1	VIN	Input Voltage 5Vdc – 32Vdc
2	DCD	Data Carrier Detect
3	Do Not Use	This signal provides last gasp
4	GND	Common Ground
5	RXD	Serial Data OUT of SAM Modem
6	TXD	Serial Data IN to SAM Modem
7	CTS	Cleat to Send
8	RTS	Ready to Send

## Operational & Installation Notes:

When storing or transporting, make sure the RJ45 plug is NOT connected to a SAM modem, this will cause unwanted battery drain.

When installing the last gasp battery unit, make sure the RJ45 **plug** is connected to the SAM modem, and the RJ45 **socket** is connected to the meter or other external unit.



### Enabling Functionality:

To enable last gasp functionality, the connected SAM modem requires a special AT command to configure all necessary parameters, which will allow the modem to send an alert upon detecting mains power-disconnection.

#### **AT\$LGSMS**

#### Configurable parameters:

<b>LGSMSMSG=</b>	SMS message text (Defaults to: "SAM4Q-D low power detected...")
<b>LGSMSDELAY=</b>	Time delay (seconds) to ensure the power is down for this time before sending last gasp SMS
<b>LGSMSNO=</b>	Phone number to send SMS alert

#### Example:

```
AT$LGSMS=LGSMSMSG=SAMXT Power Supply is low,LGSMSDELAY=60,LGSMSNO=+61437373999
```

```
AT$LGSMS?  
$LGSMS:  
LGSMSMSG:SAMXT Power Supply is low  
LGSMSDELAY:60  
LGSMSNO:+61437373999  
OK
```





# ABOUT INTERCEL

Intercel is an Australian designer and manufacturer of modems and mobile equipment for use with GSM, 3G and 4G telecommunication networks. Our products provide remote connectivity for Serial and Ethernet devices in critical industrial applications. We are located in Melbourne, Australia and our head office is in Mulgrave.



# intercel

Intercel Pty Ltd | ABN 13 007 077 161

☎ Office: +61 3 9239 2000 ✉ [intercel@intercel.com.au](mailto:intercel@intercel.com.au)

📍 33 Glenvale Crescent, Mulgrave Victoria 3170, Australia

📘 /intercelau 🐦 /intercelau 🌐 /intercelau 🌐 [www.intercel.com.au](http://www.intercel.com.au)



ISO 9001  
QMI-SAI Global