

# Product Specification

## Low Profile 4G LTE Patch Antenna

*ANTMULTIPATCH*



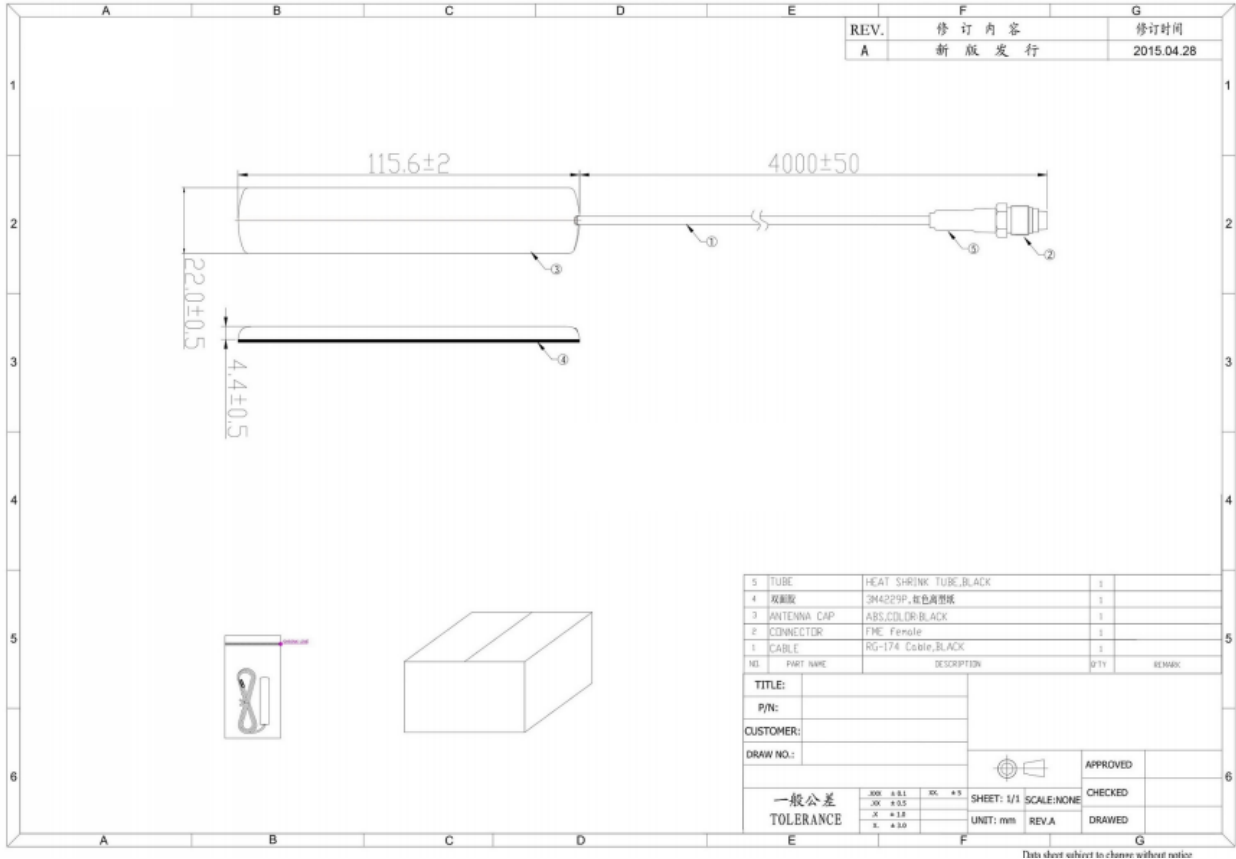
## Overview

The ANTMULTIPATCH is a well-performing and compact patch antenna suited to cover the 4G LTE, 3G CDMA and 2G GSM/GPRS frequency bands.

## Specifications

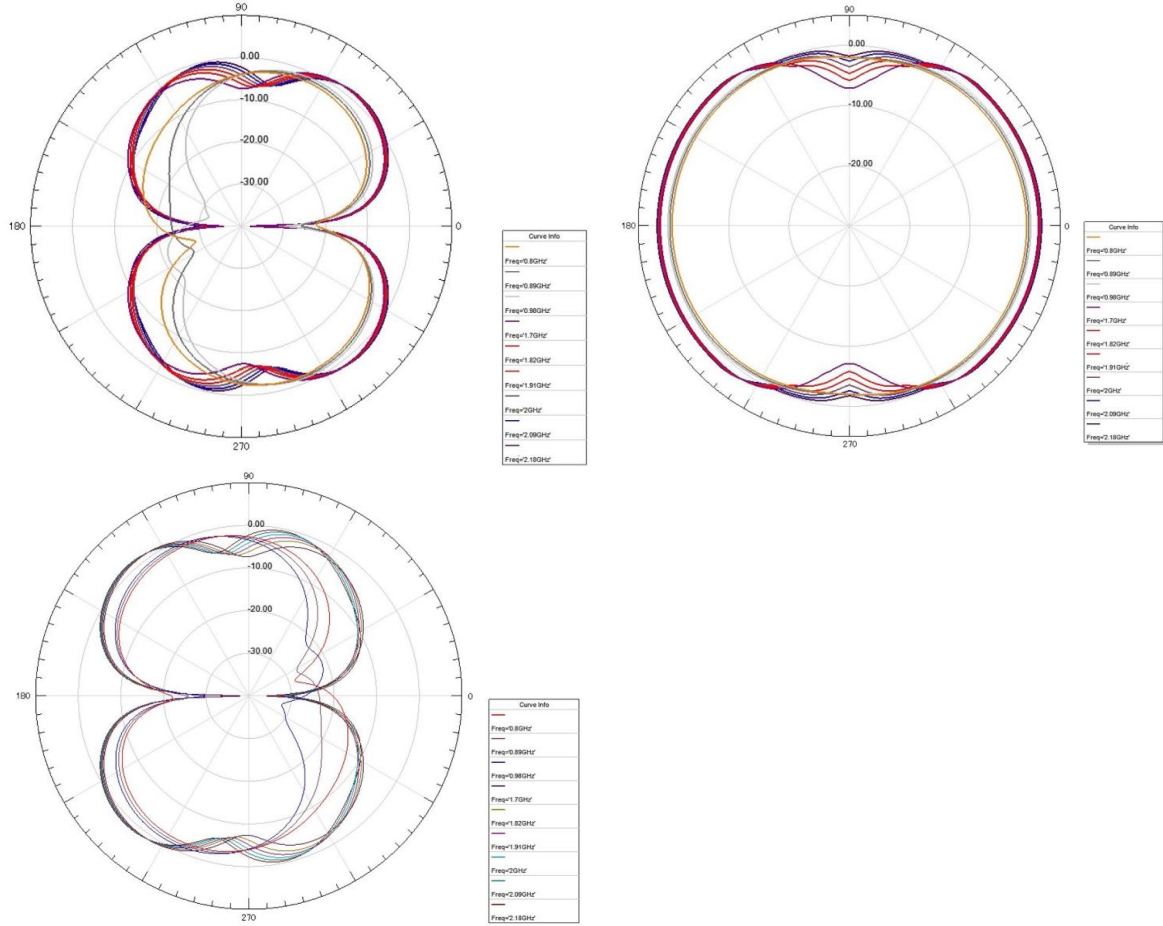
<b>Electrical Specifications</b>	
Frequency	<i>700-2700MHz</i>
Gain	<i>2.0 dBi</i>
VSWR	<i>Less than 2.5:1</i>
Connector	<i>FME/F</i>
Cable	<i>RG-174</i>
Impedance	<i>50 Ω</i>
Polarisation	<i>Linear Vertical</i>
<b>Mechanical Specifications</b>	
Cable Length	<i>4 Meters</i>
Mounting Mechanism	<i>Adhesive</i>
Height	<i>115.6 mm</i>
Width	<i>22 mm</i>
Depth	<i>4.4 mm</i>
Material	<i>ABS</i>
Temperature Rating	<i>-40°C to +85°C</i>

# Dimensions





# Figures

Radiation Pattern





 <https://www.facebook.com/Intercelau>  [www.linkedin.com/company/intercel](http://www.linkedin.com/company/intercel)

 [www.intercel.com.au](http://www.intercel.com.au)  33 Glenvale Crescent Mulgrave VIC 3170 Australia

 [intercel@intercel.com.au](mailto:intercel@intercel.com.au)  +61 (0) 3 9239 2000